

Griffith College Cork



GRIFFITH COLLEGE

# UNIVERSITY FOUNDATION PROGRAMME

**Certificate in International Foundation Studies**

(Programme, fees, and scholarships information)

Qualification frameworks - Level 5

## Entry Requirements

Learners must hold a certificate of secondary education at GCSE Level or equivalent to include a minimum pass grade in mathematics and a minimum pass grade in four other subjects. Learners must have an English level of CERFL B1+/ IELTS 5.0/ IGCSE D or equivalent.

## What will I study? *\*Semester-order dependent on intake*

Semester 1*	Semester 2*
<p><b>Core subjects</b></p> <p>English 1 Learning, Study and Communication Skills Information Technology 1 Mathematics 1</p>	<p><b>Core subjects</b></p> <p>English 2 Information Technology 2 Mathematics 2</p>
<p><b>Electives (choose one)</b></p> <p>Business Physics</p>	<p><b>Electives (choose two)</b></p> <p>Accounting Chemistry Economics Biology</p>

## Duration

	September intake	February intake
Total number of weeks	30 weeks	30 weeks
Number of vacation weeks	6 weeks	6 weeks
Number of teaching weeks	24 weeks	24 weeks
English requirement	CERFL B1+/ IELTS 5.0/ IGCSE D or equivalent	CERFL B1+/ IELTS 5.0/ IGCSE D or equivalent

## Study mode

**3 hours**  
One-to-one consultation sessions

**12.5 hours**  
Lectures, laboratories and tutorials in other modules

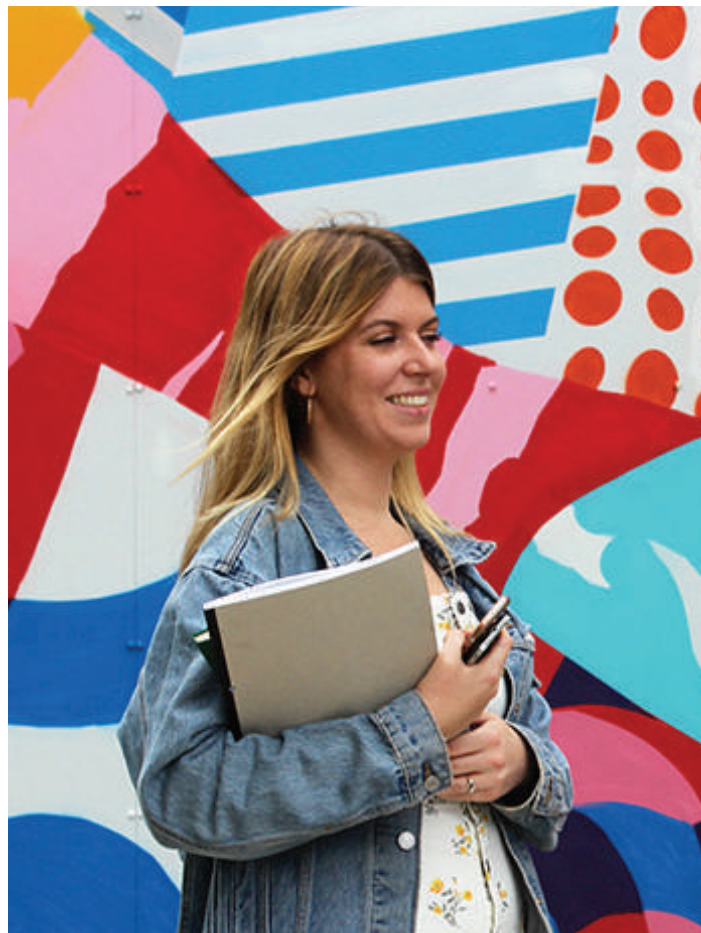


**10 hours**  
English language

**\*\* All intakes subject to minimum numbers.  
\*\* Subject to approval.**

## Tuition Fees, Bursaries & Scholarships

<b>Tuition Fee</b>	<b>12,000€</b>
<b>Other Charges</b>	<b>Also known as A.I.P Fees</b>
Academic Administration Fee	250€
International Student Support Fee	200€
Protection of Enrolled Learner Fee	245€
QQI Award Fee Level 5	100€
<b>Total A.I.P Fees</b>	<b>795€</b>



### Academic Merit Scholarships

is offered to international applicants who demonstrate a strong academic performance at the time of application. Scholarships are awarded to international applicants at the time of admission to Griffith College.

National Exams*	Academic Merit Scholarship Requirements					
	Level 0 1,000€	Level 1 3,000€	Level 2 4,000€	Level 3** 5,000€	Level 4** 6,000€	Level 5*** 8,000€
SPM	Minimum Entry Requirement	3Bs	5Bs	3As	5As	8As
NECO/WAEC /WASSCE /KCSE	Minimum Entry Requirement	3Bs	5Bs	3As	5As	8As
IGCSE	Minimum Entry Requirement	3Bs	5Bs	3As	4As	6As
Vietnam/ Indonesia/ China	Minimum Entry Requirement	>70%	>75%	>80%	>85%	>90%

\*Selected countries.

\*\*UG deposit of 2,000€ will be required.

\*\*\*UG deposit of 4,000€ will be required.

AMS Level 3,4 or 5 available only where UG progression is to scholarship partners only.

### Scholarship Partners\*

Griffith College Certificate in International Foundation Studies is an accepted pathway to a number of third level education providers.



*\*Student applying to these institutions may avail of maximum Academic merit scholarship entitlement up to level 5*

### Progression Partners\*\*

Griffith College Certificate in International Foundation Studies is an accepted pathway to a number of third level education providers.



*\*\*Student applying to these institutions may avail of maximum Academic merit scholarship entitlement up to level 2*

### Note

A large rectangular area with a red border and rounded corners, containing ten horizontal dashed lines for writing notes.